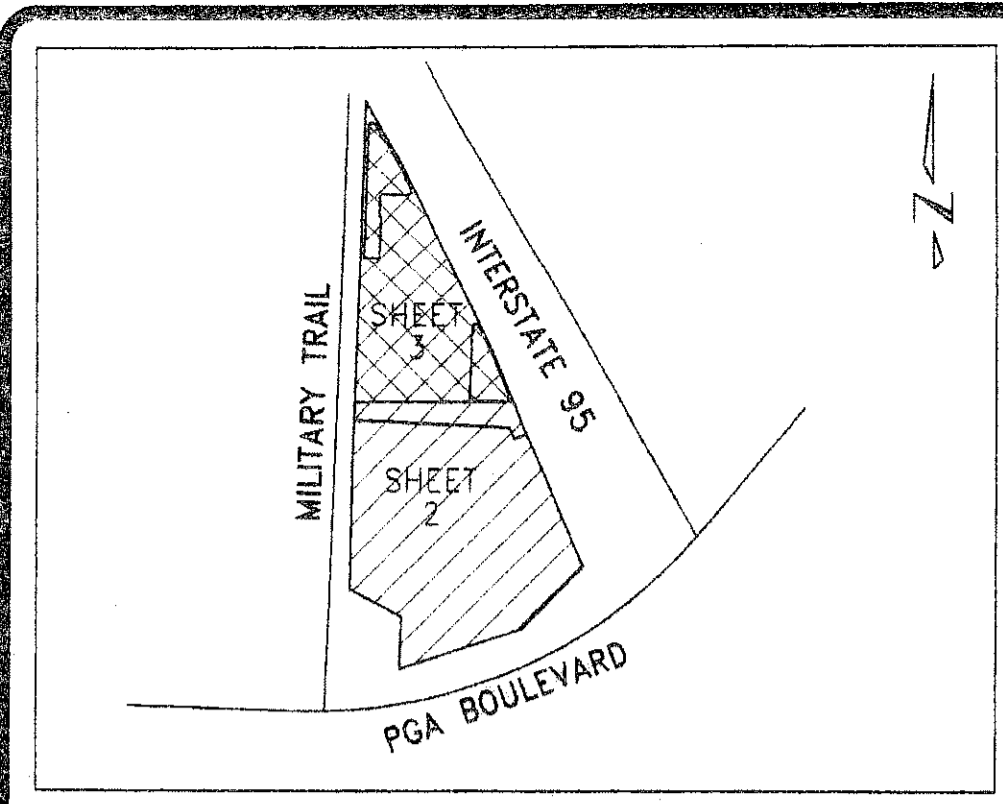


STATE OF FLORIDA  
COUNTY OF PALM BEACH  
THIS PLAT WAS FILED  
FOR RECORD AT \_\_\_\_\_ M.  
THIS DAY OF \_\_\_\_\_, 200\_\_  
AND DULY RECORDED IN PLAT  
NO. \_\_\_\_\_ ON PAGES \_\_\_\_\_  
THRU \_\_\_\_\_  
SHARON R. BOCK  
CLERK AND COMPTROLLER  
BY \_\_\_\_\_ D.C.

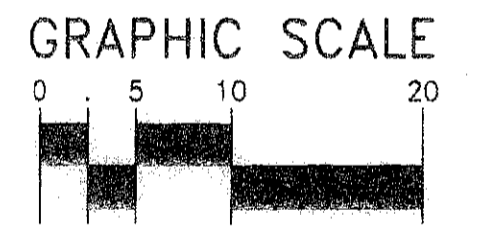
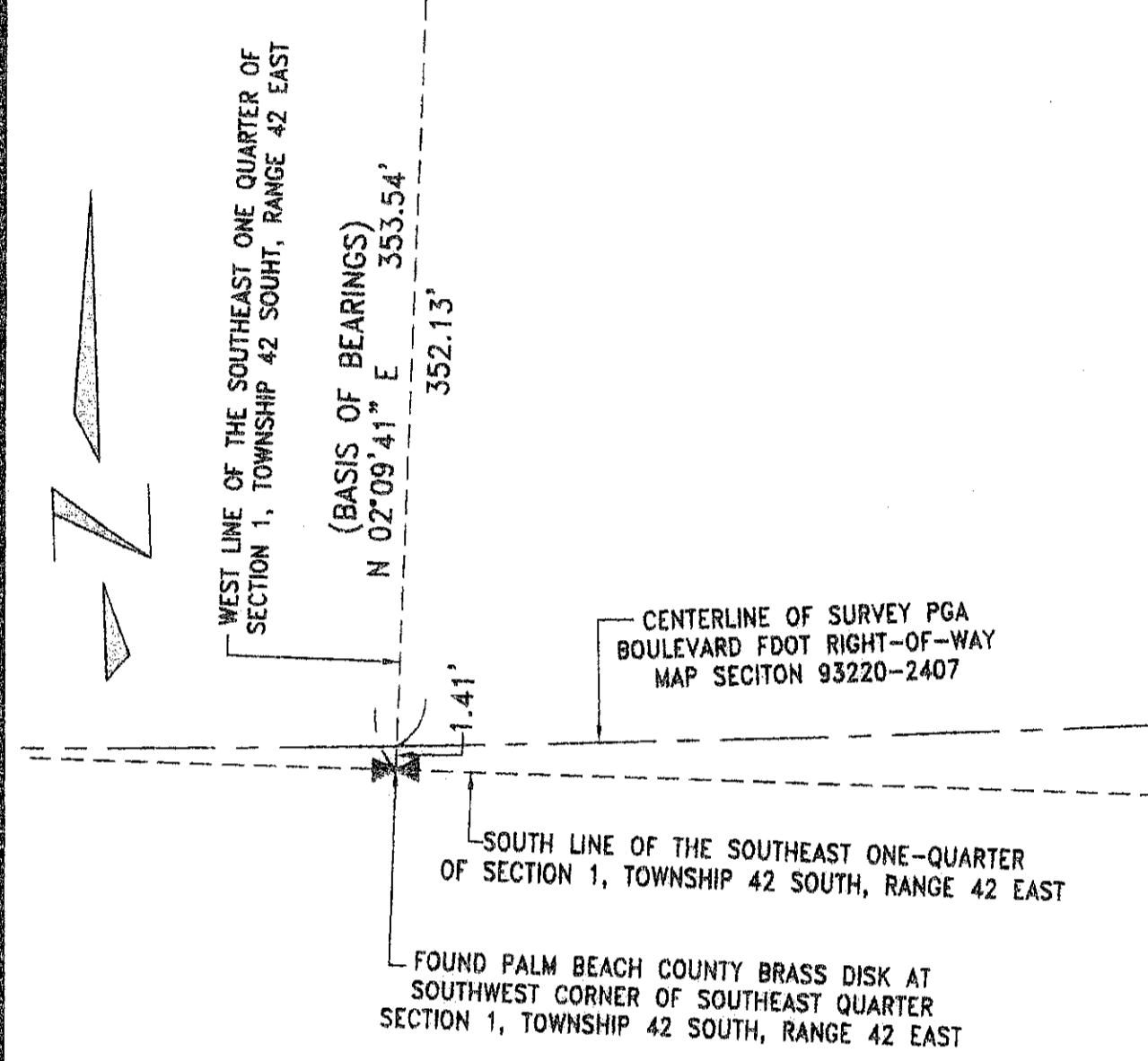
# HOTEL COMPLEX PLAT REPLAT

BEING A REPLAT OF TRACT "A" HOTEL COMPLEX PLAT, RECORDED IN PLAT  
BOOK 79, PAGES 165 THROUGH 166 PUBLIC RECORDS, PALM BEACH COUNTY,  
FLORIDA, SITUATE IN SECTION 1, TOWNSHIP 42 SOUTH, RANGE 42 EAST,  
CITY OF PALM BEACH GARDENS, PALM BEACH COUNTY, FLORIDA  
SHEET 5 OF 5  
AUGUST 2007

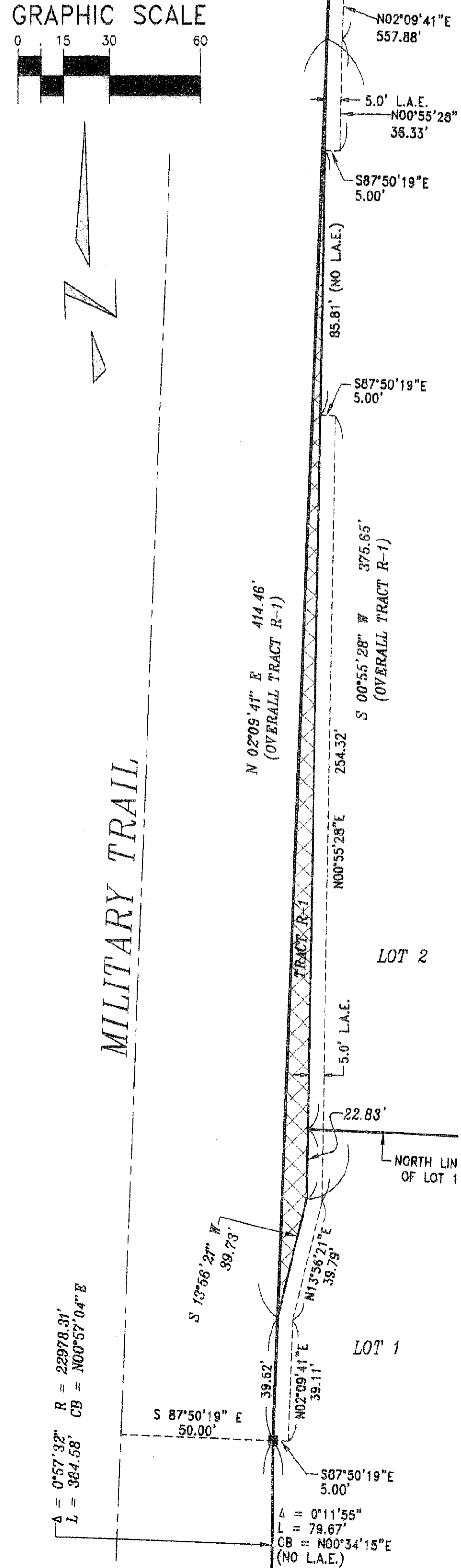


LOCATION SKETCH - NOT TO SCALE

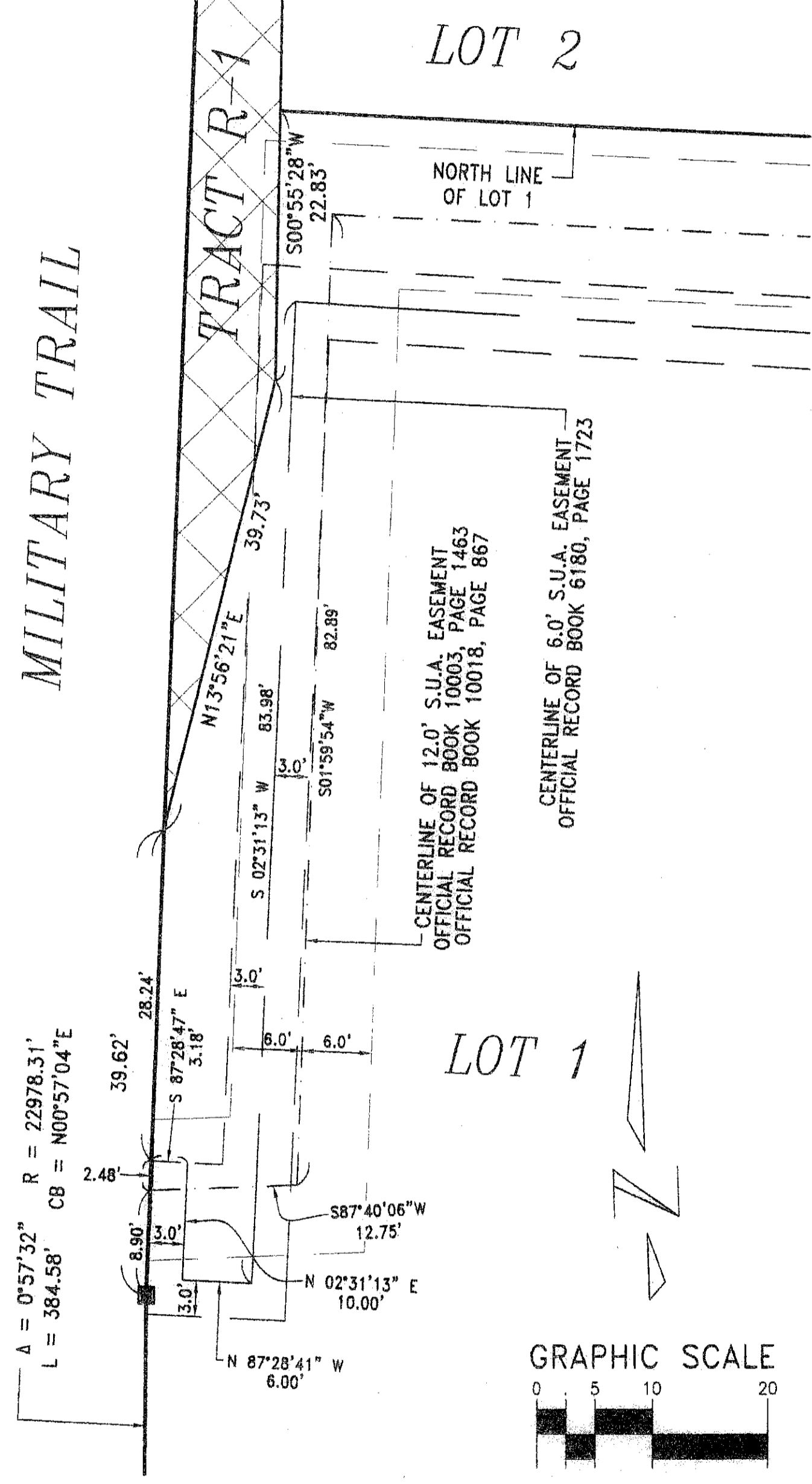
DETAIL 'A'  
1" = 10'



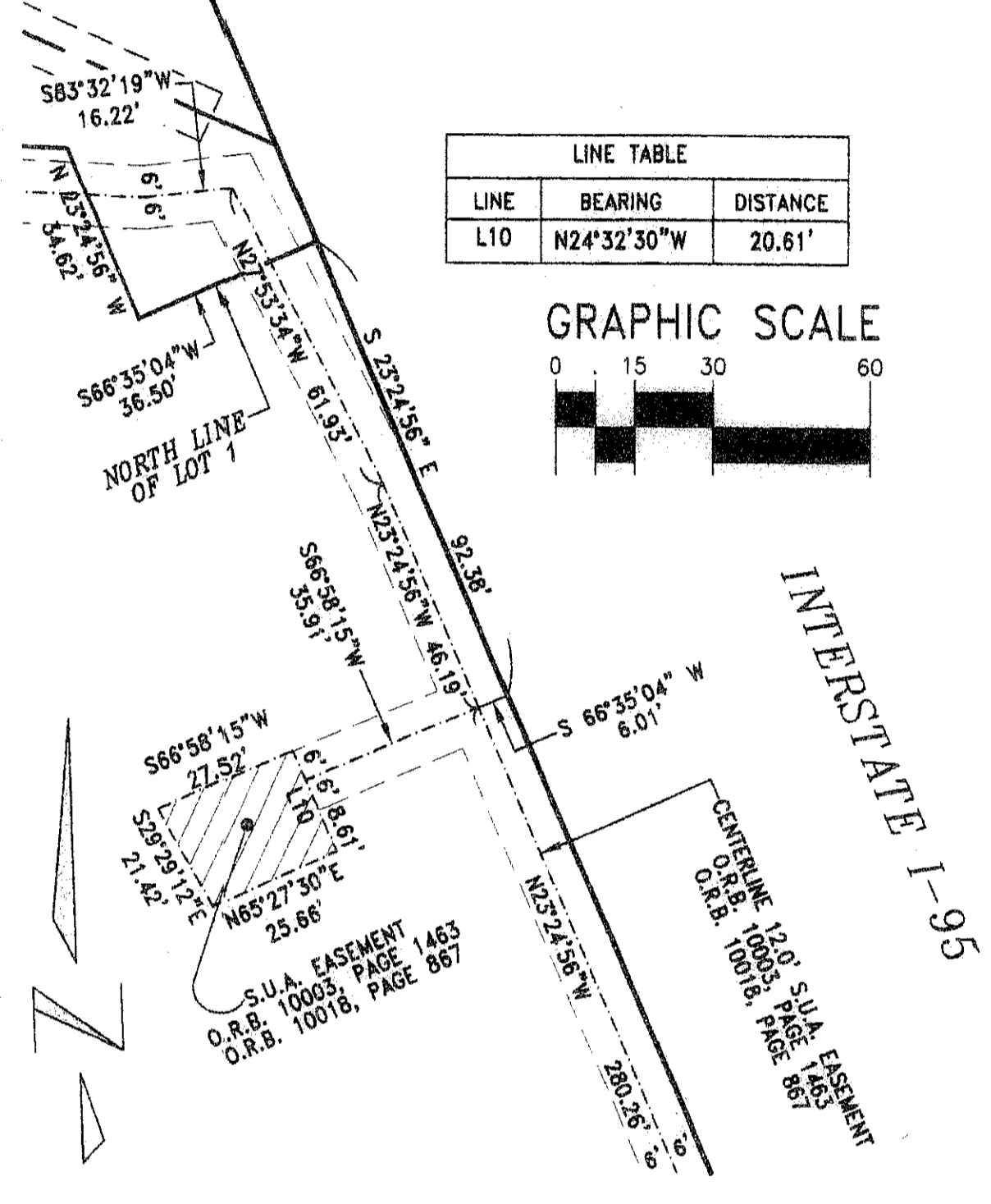
DETAIL 'B'  
1" = 30'



DETAIL 'C'  
1" = 10'

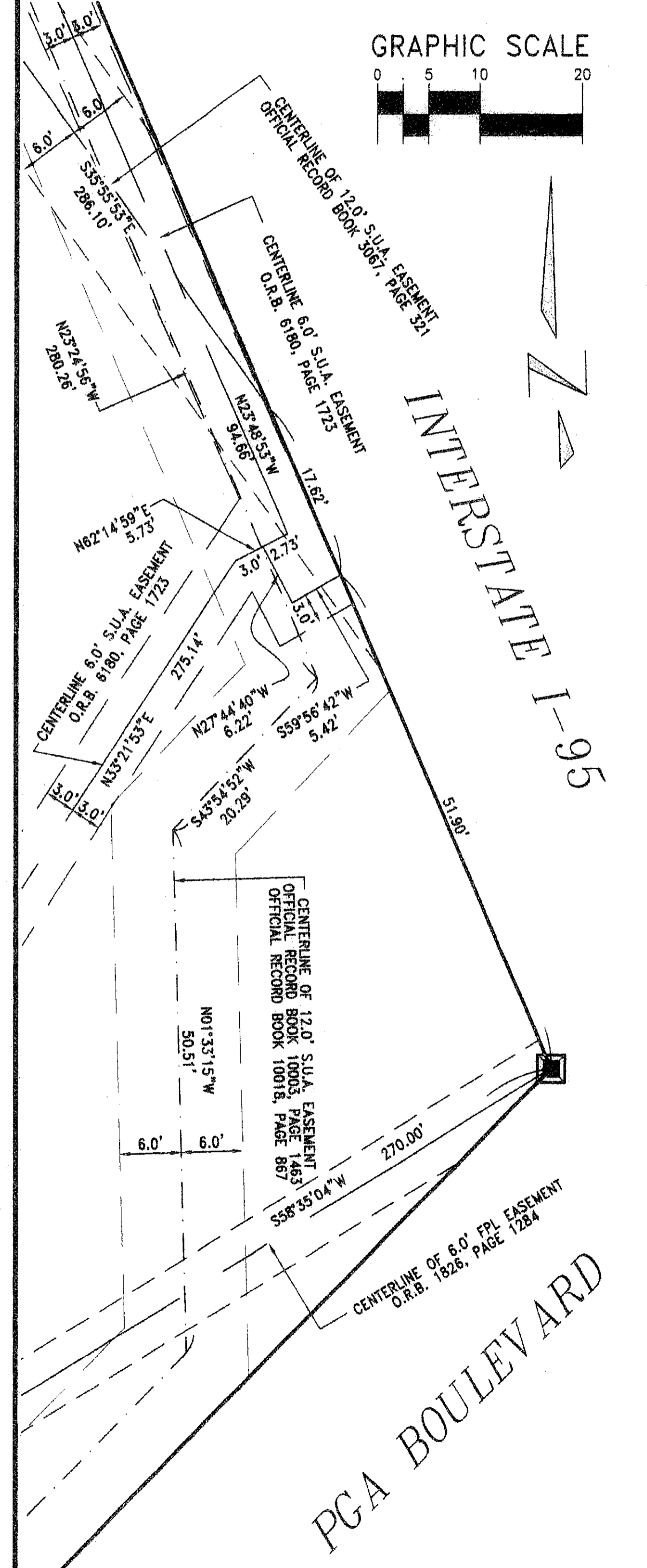


DETAIL 'D'  
1" = 30'



LINE	BEARING	DISTANCE
L10	N24°32'30"W	20.61'

DETAIL 'E'  
1" = 10'



PLAT DATE: Jul-25-2007 10:56 AM  
DRAWN BY: SB  
CHECKED BY: SB  
DATE: 12-18-06  
DWG No. D99-651P

CAD FILE:	Z:\1999 630 to 672\99-651 DOUBLETREE NORTH\DWG\HOTEL COMPLEX PLAT RE-PLAT.DWG	
DATE:	12-18-06	CHECKED: SB
SCALE:	1" = 40'	APPROVED: SB
DRAWN:	SB	DWG No. D99-651P
PROJECT No.		99-651

**Keshavarz & Associates, Inc.**  
CONSULTING ENGINEERS - SURVEYORS  
711 North Dixie Highway, Suite 201  
West Palm Beach, Florida 33401  
Tel: (561) 689-8600 Fax: (561) 689-7476 LB 4897